

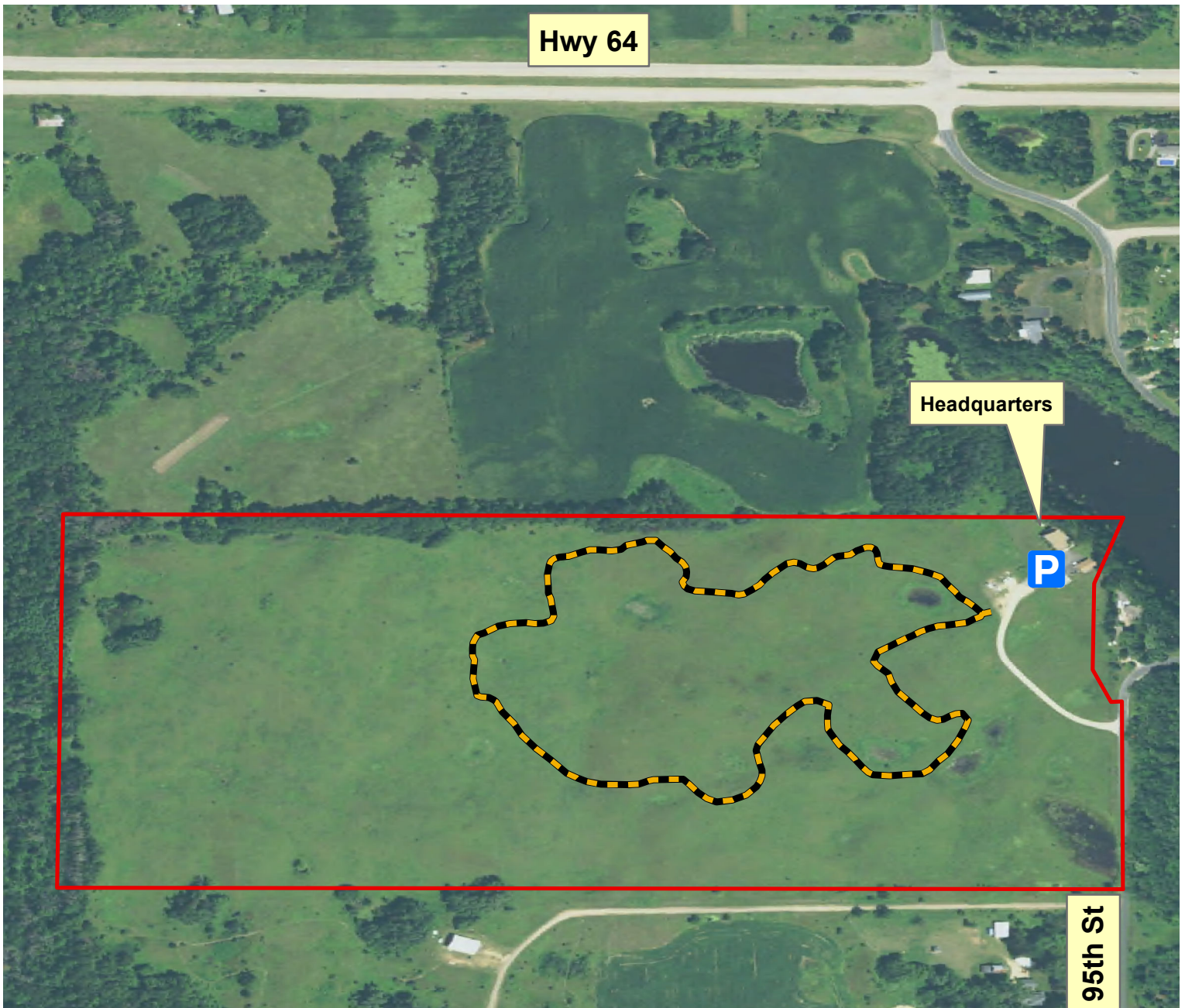


# U.S. Fish and Wildlife Service

## St. Croix Wetland Management District

St. Croix Prairie WPA

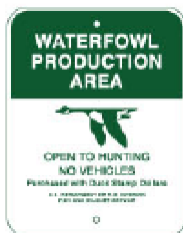
Acres: 75



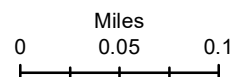
### PARKING LOT LOCATION

1764 95th St  
New Richmond, WI

St. Croix County  
T30N-R18W, Sec6



- trails
- Parking Lot
- WPA Boundary



You can find additional information at:  
([https://www.fws.gov/refuge/St\\_Croix\\_WMD/](https://www.fws.gov/refuge/St_Croix_WMD/)) or call (715-246-7784).  
Boundaries shown are approximate only. Please adhere to all posted signs.